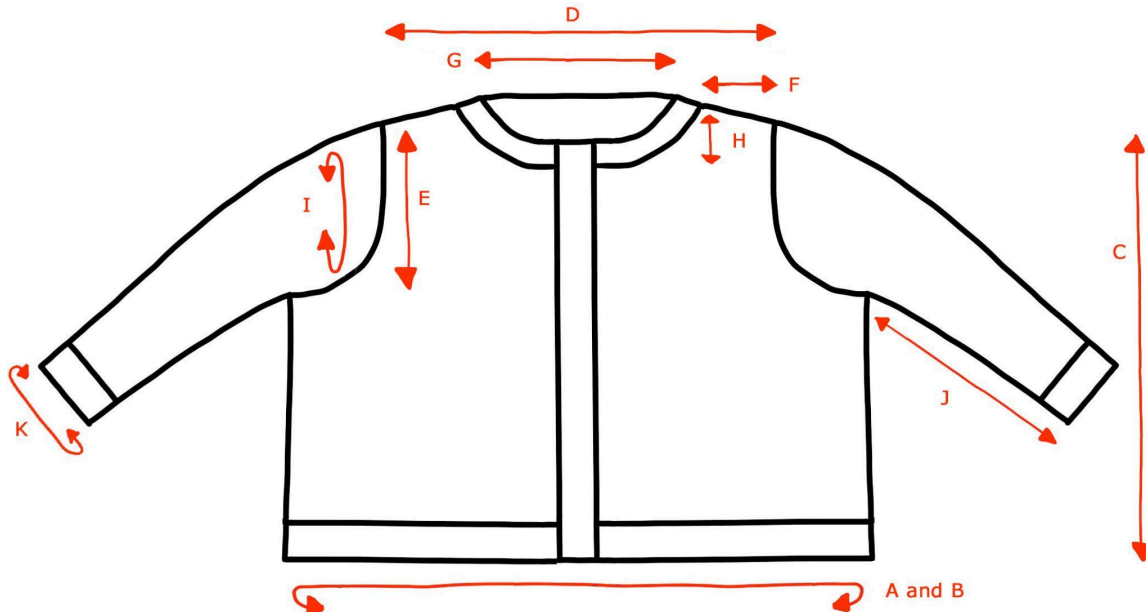


## SCHEMATIC FILE FOR REFERENCE



### Pattern Finished Measurements in inches

A - Full bust circumference (buttoned)	30.75	33.75	36.75	40.75	43.75	46.75	48.75	52.75	55.75	59.75	62.75
B - Waist circumference (buttoned)	30.75	33.75	36.75	40.75	43.75	46.75	48.75	52.75	55.75	59.75	62.75
C - Body length	16.5	16.5	17.25	17.25	18.75	18.75	18	18.25	18.25	18.75	19
D - Cross back width	11.5	12.5	13.5	13.5	14.5	15.5	15.5	15.5	16.5	16.5	17.5
E - Armhole depth	6.25	7	7.75	7.75	8.25	8.25	8.25	9	9	9.75	9.75
F - Shoulder width	3	3.5	3.5	3.5	4	4.5	4.5	4	4.5	4.5	5
G - Back neck width	5.5	5.5	6.5	6.5	6.5	6.5	6.5	7.5	7.5	7.5	7.5
H - Front neck depth	1.75	1.75	1.75	2.25	2.25	2.25	2.25	3	3	3	3
I - Upper arm circumference	11.5	12.5	13.5	14.5	15.5	15.5	16.5	17.5	18.5	19.5	20.5
J - Sleeve length (three quarter length)	12.75	12.75	13.25	13.25	14	14	14.75	15.25	15.25	16	16
K - Cuff circumference	8	9	9	10	10	11	11	11	12	12	12

### Pattern Finished Measurements in centimeters

A - Full bust circumference (buttoned)	78	85.5	93.5	103.5	111	118.5	124	134	141.5	152	159.5
B - Waist circumference (buttoned)	78	85.5	93.5	103.5	111	118.5	124	134	141.5	152	159.5
C - Body length	42	42	44	44	47.5	47.5	45.5	46.5	46.5	47.5	48.5
D - Cross back width	29	32	34.5	34.5	37	39.5	39.5	39.5	42	42	44.5
E - Armhole depth	16	18	19.5	19.5	21	21	21	23	23	25	25
F - Shoulder width	7.5	9	9	9	10	11.5	11.5	10	11.5	11.5	12.5
G - Back neck width	14	14	16.5	16.5	16.5	16.5	16.5	19	19	19	19
H - Front neck depth	4.5	4.5	4.5	5.5	5.5	5.5	5.5	7.5	7.5	7.5	7.5
I - Upper arm circumference	29	32	34.5	37	39.5	39.5	42	44.5	47	49.5	52
J - Sleeve length (three quarter length)	32.5	32.5	33.5	33.5	35.5	35.5	37.5	38.5	38.5	40.5	40.5
K - Cuff circumference	20.5	23	23	25.5	25.5	28	28	28	30.5	30.5	30.5